



# Pathways Programmes 2021



*“Opportunities like this do not come around often but when you get the chance grab it! They change your life!”*

If you have any questions about any of the programmes, please contact: [pathways@suttontrust.com](mailto:pathways@suttontrust.com)

# Who are the Sutton Trust?

The Sutton Trust champions Social Mobility from birth to the workplace through programmes, research and policy influence



Early Years



Schools



Apprenticeships

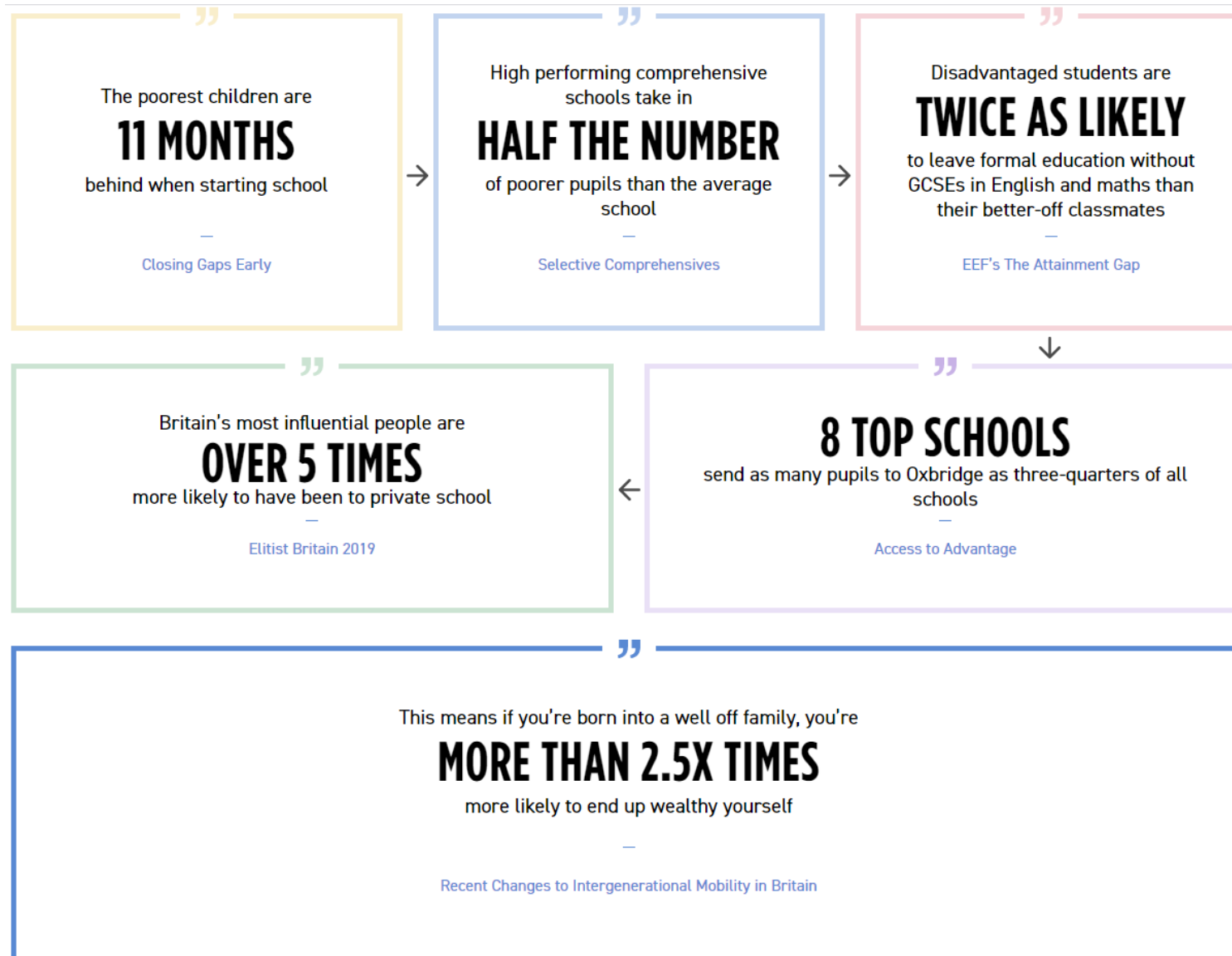


Universities



Workplaces

# Why does the Sutton Trust exist?



# What are Pathways programmes?

Pathways programmes are designed to give you an insight into your chosen profession. You will get to attend a variety of different sessions with top employers, make new friends and start planning your next steps!



# Which programmes can you get involved in?



# What will you do on a Pathways programme?

WORK  
EXPERIENCE  
PLACEMENT

ACCESS SUTTON  
TRUST ONLINE

ADMISSIONS  
SUPPORT

ATTEND  
UNIVERSITY  
EVENTS

ATTEND A  
SUMMER SCHOOL  
/ ANNUAL  
CONFERENCE

ACCESS TO OUR  
ALUMNI  
NETWORK



## What you will do:

- Attend lectures & see what university has to offer
- Meet students from around the country
- Network with professionals in your profession
- Dive into skill workshops, career talks and networking events
- Make new friendships through a variety of social activities
- Gain admissions support for thinking about your next steps



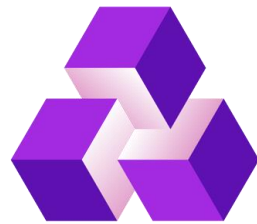
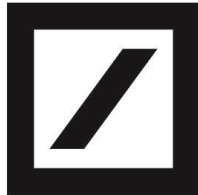


# Placements

In partnership with

**BORN TO BE**

The Deutsche Bank youth engagement programme



**NatWest  
Group**

**Bank of America  
Merrill Lynch**



**Cooley**

**Hogan  
Lovells**

**Bloomberg**<sup>®</sup>

 **BARCLAYS**



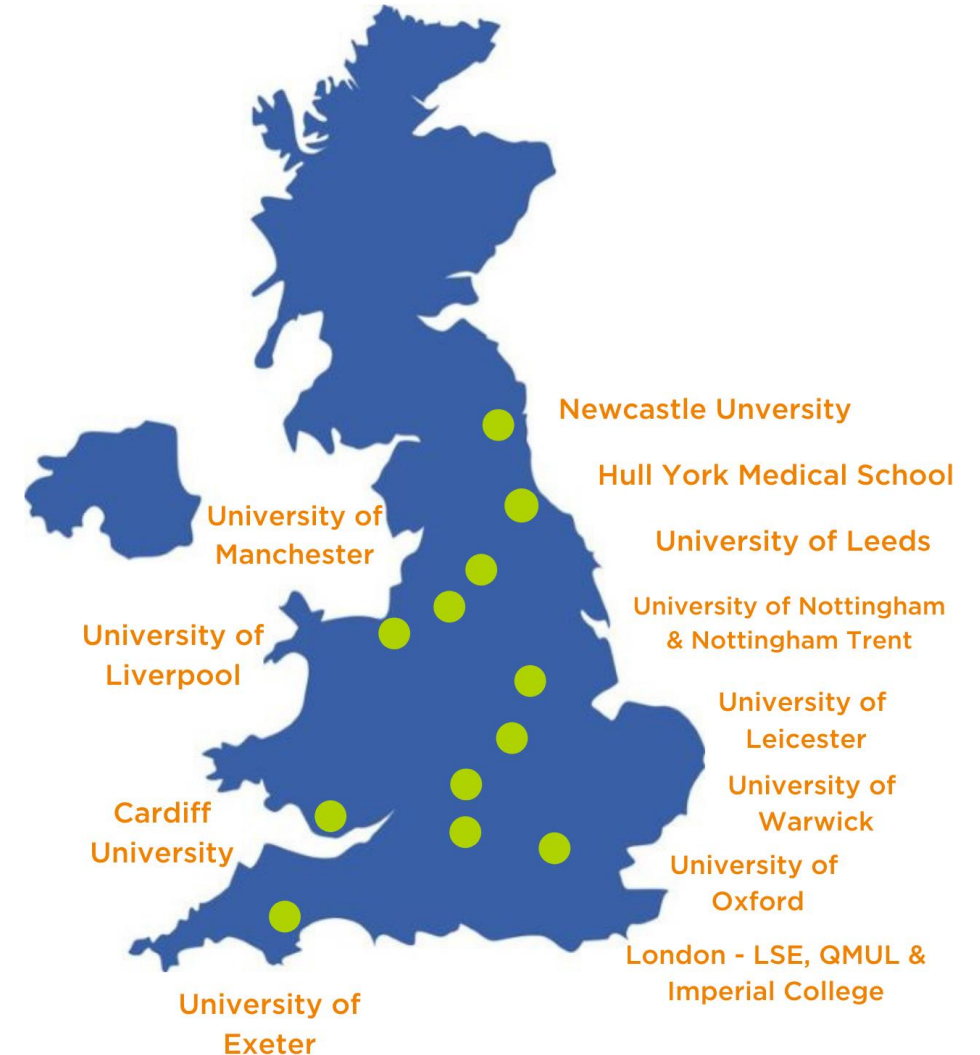
# How to get involved?

## Pathways in-person

- If you live near one of our hub universities (see across) then you could join us for our face to face programmes – all travel costs are covered!

## Pathways Online

- If you don't live near one of our partner universities, or you prefer working digitally, then you can join us for one of our digital programmes!
- Online programmes are available for Banking & Finance, Law and Consulting



# What are the benefits of a Pathways programme?

## What will you gain:

- Explore professions you are interested in
- Meet professionals in the industry and gain their top tips and insights
- Gain new skills including networking, presenting, communication & many more
- Exploring routes after school for university and apprenticeships and gaining admissions support
- Access to a support network of other students & The Sutton Trust

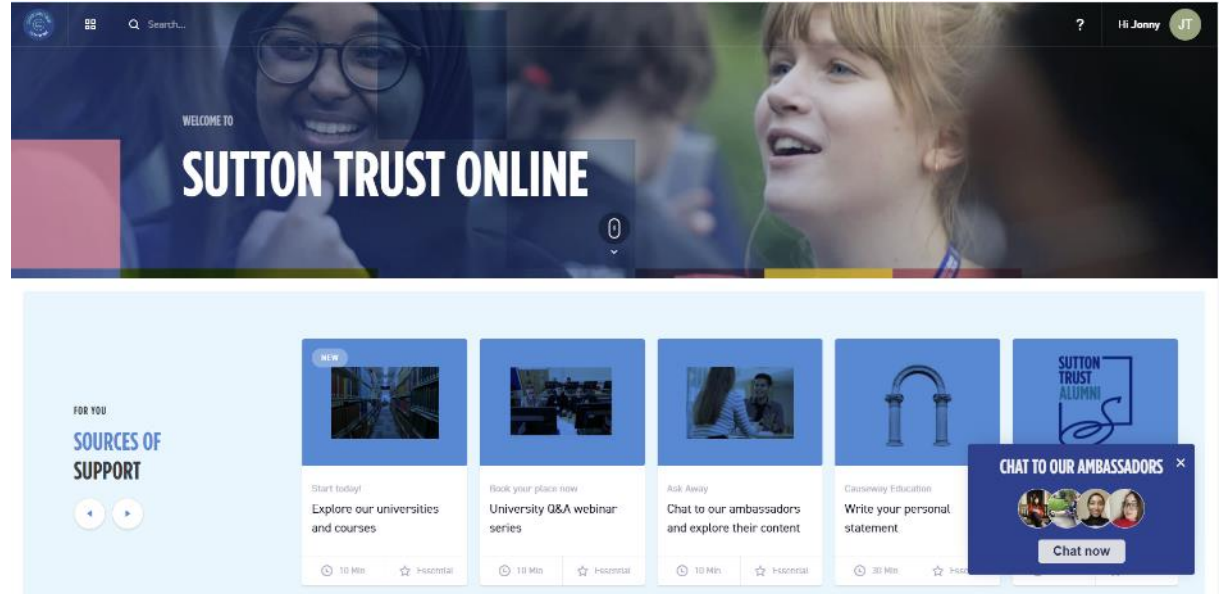




# Sutton Trust Online

## Sutton Trust Online

- Access our new digital platform that provides a one stop show for everything you need to know about university
- Use our personal statement builder and a subject-specific mentor
- Speak to current undergraduates and Sutton Trust alumni to find out what life is really like
- Delve into our library of resources to help you explore, apply, prepare and succeed at university
- Attend exclusive webinars and events
- Ongoing support throughout the last two years of school or college



# What previous students have said

*“This is a great opportunity that you should 100% consider, if not you will really regret it. It will give you a head start in understanding the sector that you are interested in. Lastly, there are benefits that will help you when applying to university”* Pathways student 2018/19

*“The programmes are run great people who are there to support you throughout the programme and have continued to support me after I graduated. You will make great friends and have great experiences”* Pathways student 2018/19





# Why take part in a Pathways programme?

92%

Sutton Trust students in the last ten years went onto higher education

4x

Sutton Trust students are 4x more likely to receive an offer from a top university

93%

Sutton Trust students from the lowest socio-economic group move to the highest after leaving university

7%

Sutton Trust students go on to attend Oxford or Cambridge

62%

Sutton Trust students go on to attend a Russell Group university

# Who can apply?

## Mandatory Criteria



Are currently in:

- Year 12 (England and Wales)
- Year 13 (Northern Ireland)
- S5 (Scotland)



Attend, and have always attended, a state (non fee-paying) school

## Additional Criteria

We look at a number of additional criteria to offer places on the programme. These include:

- Grades achieved
- Your background
- Your school's context
- Where you live



The more of these criteria you meet, the more likely you are to receive a place

For in-person programmes you need to be in commuting distance of the university (typically one hour's travel)

# How do I apply?



Discover which programme is right for you and apply at <https://www.suttontrust.com/our-programmes/>



Complete the online application form at [apply.suttontrust.com](https://apply.suttontrust.com) ahead of **the deadline listed on The Sutton Trust website.**



You will hear from your university or the Trust within a couple of weeks of applications closing to confirm whether you have a place.



Join the Sutton Trust's outstanding alumni community!